

# SMARTSIDE - EDF HEADQUARTERS



## PROJECT OWNERSHIP

NEXIMMO 90  
Nexity Immobilier  
d'Entreprise

## ENGINEERING OFFICE

Convergence Ingenierie  
(bet Restauration) - AE75  
(Economiste) - Green Affair  
(AMO HQE) - Impedance  
(BET Acoustique) - Phy-  
torestore (Paysagiste) -  
Builders & Partners (MOEX)  
- Syntesia (Synthèse, BIM  
management EXE)

## ARCHITECT

Atelier 2/3/4 studio 135

## CUSTOMER

EIFFAGE (structural work)  
Goyer (Façade)EDF head  
office

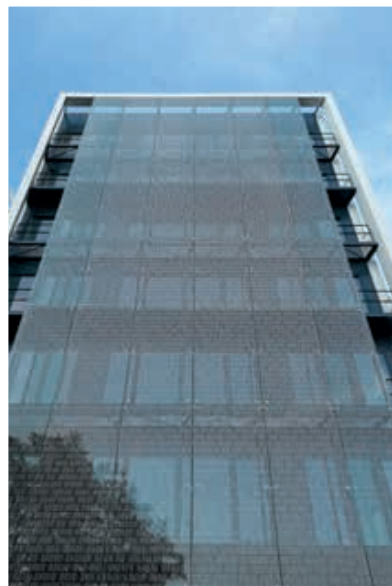
## REALISATION

2019

## SURFACE

40 000 m<sup>2</sup>

1 400 pièces R1101  
160 pièces S3000  
Panneau Photovoltaïque



## SMARTSIDE is a commercial property complex of restructuring (1/3) and new buildings (2/3).

Catering areas, meeting rooms, a multi-  
purpose hall and two car parks have  
been built for this large-scale project.  
The total surface area is 40,000m<sup>2</sup>, with  
RT2012-25% energy targets and NF  
certification for tertiary buildings.

«Its redevelopment is an opportunity  
to consider it as a unique whole,  
with a strong identity» - Ateliers 2/3/4,  
Studio 135. Developed on campus  
model, it is designed to encourage  
interaction.

With natural lighting on the landings, an  
emblematic glazed staircase  
and controlled depth of the floors,  
the interior layout gives priority to  
views of the exterior and the garden.

## Sadev's role

Delivery of our CLASSIC range products:  
Approximately 1,400 R1101 ball-and-  
socket joints for 22 to 26 mm thick and  
around 160 S3000 crosses.  
Used for photovoltaic panels.