

S 3106

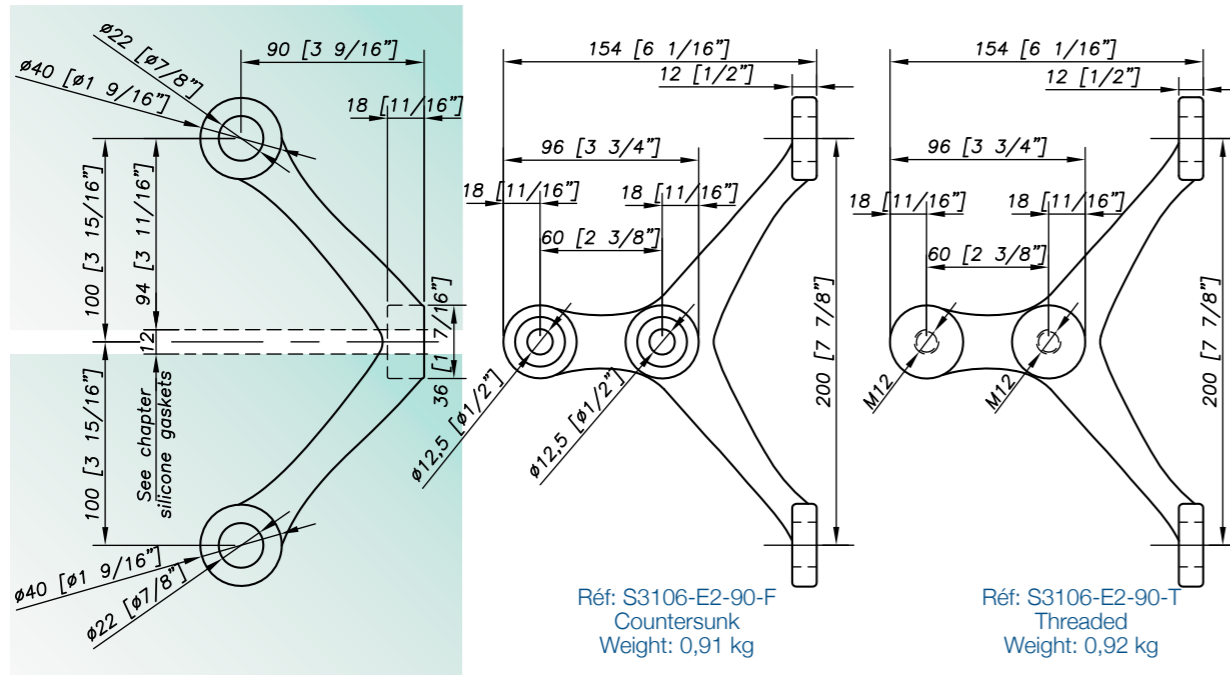
Designation: Casted stainless steel spider, with plate



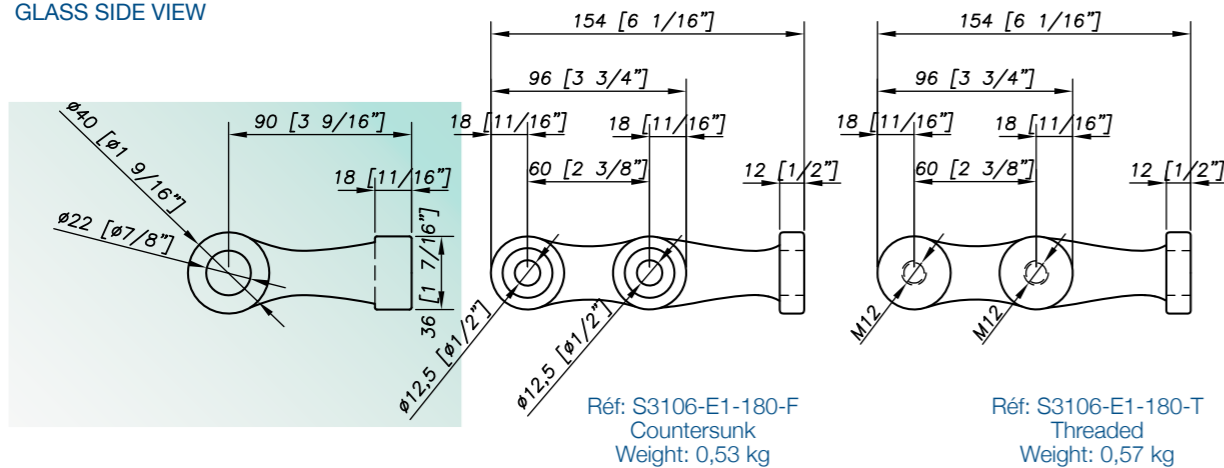
Material: AISI 316 (1.4408) – Surface finish: Dull polished GR400

Dimensions

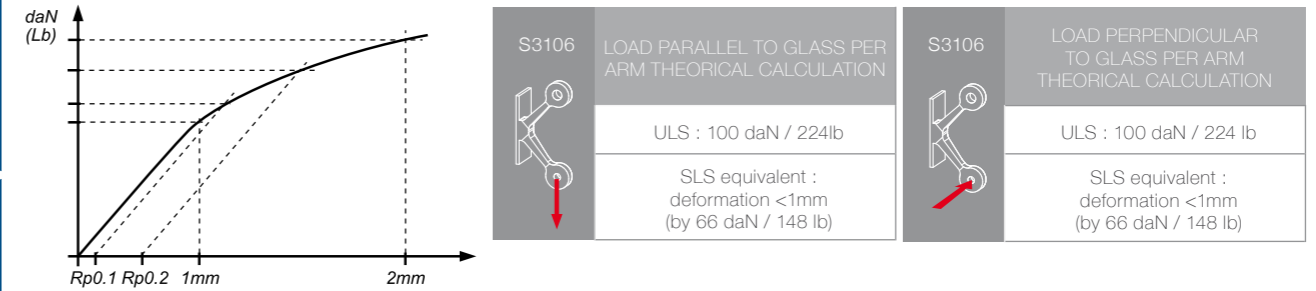
GLASS SIDE VIEW



GLASS SIDE VIEW

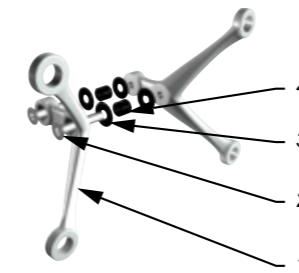


Mechanical performances

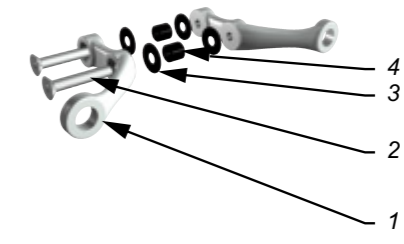


*SLS – Serviceability Limit State : load at 1mm deformation **ULS – Ultimate Limit State : load at the elastic limit (Rp0.1) Values are given without factor of safety.

Configurations

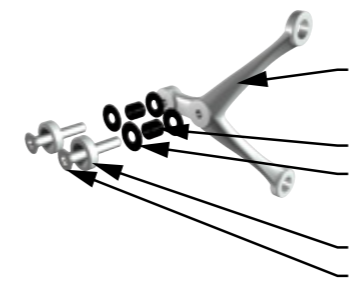


Réf: K3106-V-2B-2B
Weight: 1,93 kg

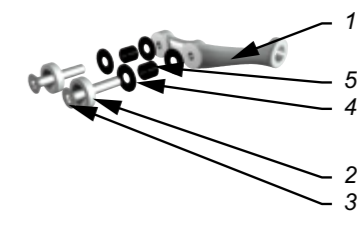


Réf: K3106-V-1B-1B
Weight: 1,2 kg

MARK	QTY	DESIGNATION	MATERIAL
1	1+1	Spider S3106	AISI 316 - surface finish: dull polished GR400
2	2	Bolt DIN7991 M12	A4
3	4	Contact Washer	Polyacetal / polyethylene
4	2	Glass hole grommet	Polyacetal / polyethylene



Réf: K3106-V-2B
Weight: 1,17 kg



Réf: K3106-V-1B
Weight: 0,8 kg

MARK	QTY	DESIGNATION	MATERIAL
1	1	Spider S3106	AISI 316 - surface finish: dull polished GR400
2	2	Backing plate flange countersunk hole	AISI 316L - surface finish: dull polished GR400
3	2	Bolt DIN7991 M12	A4
4	4	Contact Washer	Polyacetal / polyethylene
5	2	Glass hole grommet	Polyacetal / polyethylene

Suggested mounting instruction

The fixing of the spider occurs with two countersunk screws DIN7991 M12 (available on request). These spiders have no positioning insert (fixed point, dilating and free point). The holes of dilatation Ø22 in the spiders are not to be used to adjust the spiders! They are needed to absorb the manufacturing tolerances and the thermal deformation of the glass and of the structure.