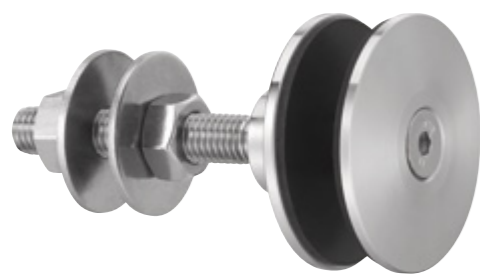


R 1006-M8

Designation : swivel fitting, cylindrical head, installation from the outside possible

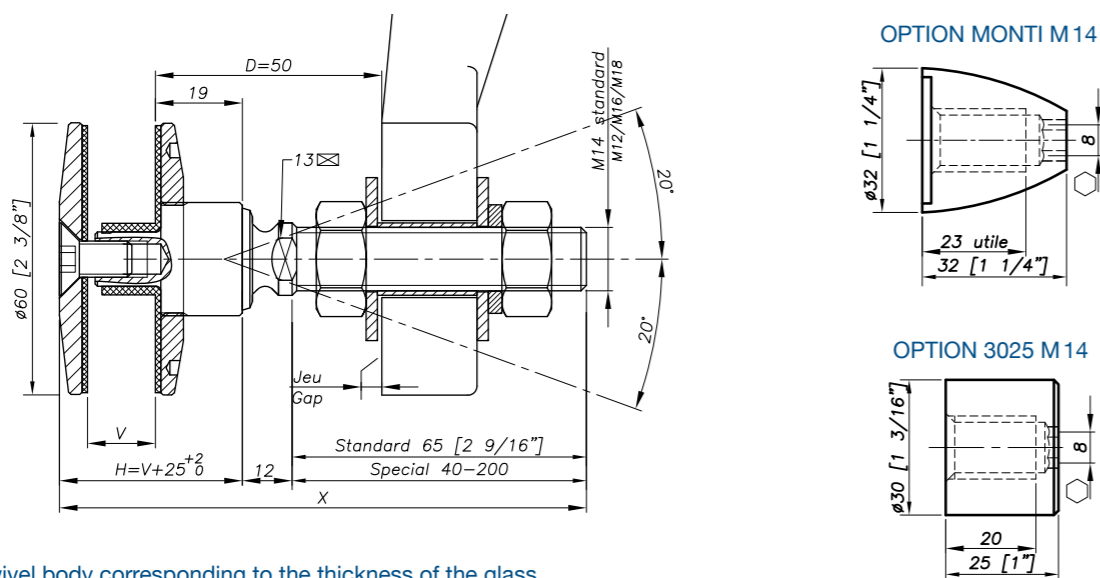


REFERENCE TO ORDER			
GLASS THICKNESS	Ø AXIS	LENGTH AXIS (mm)	ARTICLE CODE
Bespoke glass thickness	M14	65	R1006-M8-V-1465*
SPECIAL	SPECIAL	SPECIAL	R1006-M8-V-SP

* R1006-M8-V-1465 : Model - Glass thickness - Type axis and length.

Patent No: 9806556
Sealing strip between glazing available p.8.26

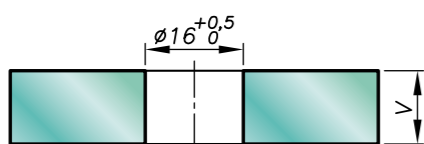
Dimensions



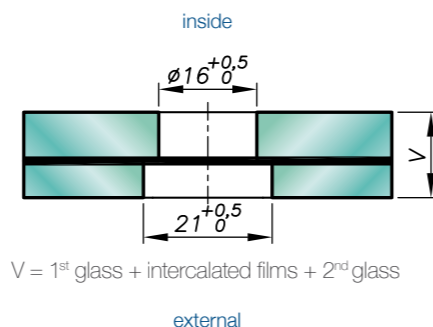
H = Swivel body corresponding to the thickness of the glass.
V* = glass thickness

Glass drilling

MONOLITHIC GLASS



LAMINATED GLASS



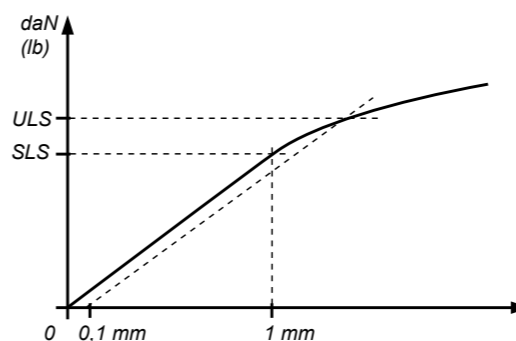
V = 1st glass + intercalated films + 2nd glass

Available for glass thicknesses from 8 to 31.52 mm, for other thicknesses please consult us.

It is important to provide the following information with each request: the glass composition (ex.: 10 mm monolithic, 8.8.4 laminated, 8.8.2-12-10 insulating) / the length and diameter of the threaded axle if not standard dimensions (M14, 65 mm) / the reference of the spider to be used as support, or the thickness of an existing support for the delivery of the spacer.

R 1006-M8

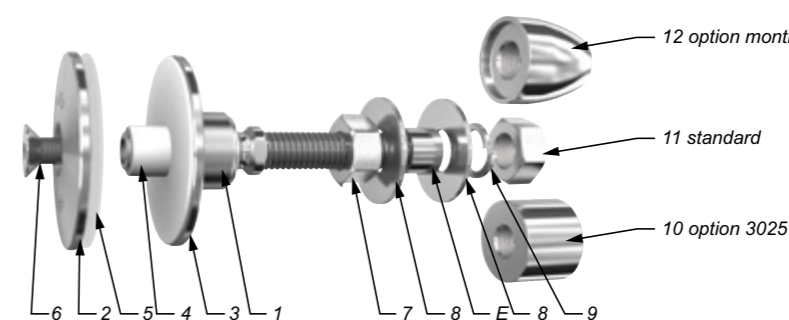
Mechanical performance



	D	BENDING CAPACITY		PULL OUT CAPACITY
		SLS*	ULS*	ULS*
M 14	45mm	344 daN (773 lb)	577 daN (1297 lb)	1400 daN (3147 lb)
	60mm	153 daN (343 lb)	364 daN (818 lb)	
M16	45mm	504 daN (1133 lb)	827 daN (1859 lb)	
	60mm	253 daN (568 lb)	525 daN (1180 lb)	

*SLS - Serviceability Limit State: load at 1mm deformation
*ULS = Ultimate Limit State: load at the elastic limit (Rp0.1).
Values are given without factor of safety.
Tests available online : www.sadev.com

Components



MARK	QUANTITY	DESIGNATION	MATERIAL
1	1	Swivel body	X2 Cr Ni Mo 17.12.2 as per EN 10088-3
2	1	External plate	X2 Cr Ni Mo 17.12.2 as per EN 10088-3
3	1	Glass nut Ø60	X2 Cr Ni Mo 17.12.2 as per EN 10088-3
4	1	Shoulder contact washer	White polyacetyl / white polyethylene
5	1	Contact washer	White polyacetyl / white polyethylene
6	1	Bolt DIN 7991 M8x20	A4
7	1	Nut DIN 934	A4
8	2	Washer	A4
9	1	Lock washer DIN 127	A4
10	1	3025 Cap nut - Option	X2 Cr Ni Mo 17.12.2 as per EN 10088-3
11	1	Nut DIN 934	A4
12	1	Monti cap nut - Option	X2 Cr Ni Mo 17.12.2 as per EN 10088-3

Suggested mounting instruction

A – Classic mounting

Insert parts N° 1, 3, 4 and 3 into the glass hole. Place the second contact washer N°5 over assembly N°2 and thread on glass nut N°6. Tighten to 20Nm for tempered glass using SADEV catalog ref. 097581160. Thread on nut N°7 and apply washer N°8. Insert the threaded axle into the support with spacer E (available on request), see technical page. Adjust the depth. Mount the second washer N°8, lock washer N°9, and nut N°7. Tighten to 60Nm (45 ft-lb) using a 22 mm wrench.

B – Blind mounting : installation from the outside (N° access to the structure)

Mount nut N°7 and washer N°8 onto assembly N°1,3,4. Insert the threaded axle into the support with spacer E (available on request), see technical page. Adjust the depth. Mount the second washer N°8, lock washer N°9, and nut N°7. Tighten to 60Nm (45 ft-lb) using a 22 mm wrench. Mount the glazing. Mount contact washer N°8 + plate N°2 with screw M8 N°6 and tighten to 20Nm for monolithic glass and 10Nm for laminated glass using SADEV catalog ref. 097581160.

SADEV recommends using thread locking, except specific mounting constraint.